



1 CONTEXT PLAN
1 : 1500



2 LOCALITY PLAN
NOT TO SCALE

LANDSCAPE DEVELOPMENT APPLICATION - DRAWING SCHEDULE			
SHEET No.	TITLE	SCALE	REVISION No.
LDA000	COVER PAGE	AS SHOWN @ A1	B
LDA100	LANDSCAPE SITE PLAN	1:500 @ A1	B
LDA101	LANDSCAPE CONCEPT PLAN STAGE 1	1:250 @ A1	B
LDA102	LANDSCAPE CONCEPT PLAN STAGE 2	1:250 @ A1	B
LDA103	LANDSCAPE DETAILED PLAN	1:100 @ A1	B
LDA104	LANDSCAPE DETAILED PLAN	1:100 @ A1	B
LDA105	LANDSCAPE SECTIONS	1:100 @ A1	B
LDA106	LANDSCAPE SECTIONS	1:100 @ A1	B
LDA107	LANDSCAPE PLANTING PALETTE	N/A	B
LDA108	LANDSCAPE PRECEDENT IMAGES	N/A	B
LDA109	LANDSCAPE PRECEDENT IMAGES	N/A	B
LDA110	EXISTING TREE PLAN	1:500 @ A1	B

LANDSCAPE DEVELOPMENT APPLICATION

BATEMAN'S BAY REGIONAL AQUATIC, ARTS AND LEISURE CENTRE (BRAALC)

MACKAY PARK, BATEMANS BAY, NSW 2536

Issue			
No.	Date	Description	Chkd
1	27/09/2019	DA Submission	CB

Architect
NBRSARCHITECTURE.
LANDSCAPE

Sydney
61 2 9922 2344
nbrsarchitecture.com

Any form of replication of this drawing in full or in part without the written permission of NBRS+PARTNERS Pty Ltd constitutes an infringement of the copyright.

Nominated Architect:
Andrew Duffin NSW 5602
NBRS & Partners Pty Ltd VIC 51197

© 2018
ABN 16 002 247 565

Project
Batemans Bay - Aquatic, Arts and Leisure Centre
at
Mackay Park, Batemans Bay, NSW 2536
for
Eurobodalla Shire Council

Drawing Title
Cover Sheet



- 1 PERFORMING ARTS CENTRE ENTRY EXPERIENCE WITH TWO-TONED GRANITE UNIT PAVING, FEATURE BANDS, FLUSH TIMBER BOARDWALKS AND GARDEN BED MOUNDS
- 2 LOW SEATING WALLS AND BENCHES LOCATED ALONG GARDEN BED PLANTING WITH SMALL SHADE TREES AND FEATURE GRANITE BOULDERS
- 3 ENTRY EXPERIENCE WITH TWO-TONED GRANITE UNIT PAVING AND FEATURE BANDS
- 4 STAIRS AND RAMP WITH FEATURE WALLS TO PROVIDE ACCESS
- 5 ZERO DEPTH WATER FEATURE TO ENTRY WITH SHADE TREES PLACED SPORADICALLY AND CAFE SEATING BELOW.
- 6 GRANITE BANDING TO CONTINUE ACROSS ROAD
- 7 YARNING CIRCLE GATHERING SPACE WITH DECOMPOSED GRANITE AND FEATURE GRANITE BOULDERS
- 8 BIKE PARKING
- 9 MATURE EXISTING TREES TO BE RETAINED SMALL TREES REMOVED
- 10 SYNTHETIC TURF OPEN SPACE WITH MOUNDING, UMBRELLAS AND SHADE SAILS
- 11 NATIVE PLANTING TO SLIDE BASE
- 12 NATURE PLAYGROUND IN MULCH
- 13 SHADE SAILS FOR LARGE GROUP GATHERINGS
- 14 STRETCHED MEMBRANE SHADE STRUCTURE OVER SEATING
- 15 GRANITE "SEA WALL" TO AQUATIC CENTRE EDGE
- 16 SMART POLES WITH BANNERS TO ENTRY ROAD
- 17 WIRE TRELLIS WITH CLIMBING PLANTS TO BUILDING FACE
- 18 COLOURED CONCRETE CIRCULATION PATHS
- 19 CARPARK AREAS WITH TREE PLANTING
- 20 TRELLIS FENCE ALONG BOUNDARY WITH CLIMBING VINES 2.4m HIGH
- 21 LANDSCAPE REHABILITATION ZONE INCLUDING WEED REMOVAL, MULCH & NATIVE GROUNDCOVERS

Issue No.	Date	Description	Chkd
1	27/09/2019	DA Submission	CB

Architect
NBRARCHITECTURE
LANDSCAPE

Sydney
61 2 9922 2344
Any form of replication of this drawing in full or in part without the written permission of NBR+PARTNERS Pty Ltd constitutes an infringement of the copyright.
Nominated Architect:
Andrew Duffin NSW 5602
NBR & Partners Pty Ltd VIC 51197
© 2018
ABN 16 002 247 565
nbrsarchitecture.com

Project
Batemans Bay - Aquatic, Arts and Leisure Centre
at
Mackay Park, Batemans Bay, NSW 2536

for
Eurobodalla Shire Council

Drawing Title
SITE PLAN

- | | | | | | |
|--|--|--|--|---|---|
| TURF | PROPOSED TREES 200LT POT SIZES | PROPOSED PALMS | HARDWOOD TIMBER BOARDWALK FLUSH WITH ADJACENT PAVING | DECOMPOSED GRANITE | STAINLESS STEEL TENSILE WIRE & POST FENCE 2.4m HIGH |
| MASS PLANTING 5 PLANTS PER m ² 5LT POT SIZE | PROPOSED GRASS TREES 45L POT SIZE | COLOURED CONCRETE | LOW SEATING WALLS | MULCH SOFT FALL WITH HARDWOOD TIMBER NATURE PLAYGROUND ELEMENTS | EXISTING FENCE RETAINED |
| CLIMBING VINES ON WIRE TRELLIS | EXISTING TREES TO BE RETAINED (REFER SHEET 110 FOR EXISTING TREE PLAN) | LIGHT GRANITE UNIT PAVING ON CONCRETE SLAB | WAY FINDING SIGNAGE | ASPHALT CARPARK | |
| LANDSCAPE REHABILITATION ZONE | EXISTING TREES TO BE REMOVED (REFER SHEET 110 FOR EXISTING TREE PLAN) | DARK GRANITE UNIT PAVING ON CONCRETE SLAB | GRANITE BOULDERS LOCALLY SOURCED | STAINLESS STEEL TENSILE WIRE TRELLIS 2.6m HIGH WITH VINES | |

Date 27/09/2019 5:51:21 PM
Scale 1:500 @ A1 or 1:1000 @ A3

Drawing Reference
18076-NBR-L-LDA-100
Revision
1

- 1 PERFORMING ARTS CENTRE ENTRY
EXPERIENCE WITH TWO-TONED GRANITE
UNIT PAVING, FEATURE BANDS, FLUSH TIMBER
BOARDWALKS AND GARDEN BED MOUNDS
- 2 LOW SEATING WALLS AND BENCHES LOCATED
ALONG GARDEN BED PLANTING WITH SMALL
SHADE TREES AND FEATURE GRANITE
BOULDERS
- 3 ENTRY EXPERIENCE WITH TWO-TONED
GRANITE UNIT PAVING AND FEATURE BANDS
- 4 STAIRS AND RAMP WITH FEATURE WALLS TO
PROVIDE ACCESS
- 5 ZERO DEPTH WATER FEATURE TO ENTRY WITH
SHADE TREES PLACED SPORADICALLY AND
CAFE SEATING BELOW.
- 6 GRANITE BANDING TO CONTINUE ACROSS
ROAD
- 7 YARNING CIRCLE GATHERING SPACE WITH
DECOMPOSED GRANITE AND FEATURE GRANITE
BOULDERS
- 8 BIKE PARKING
- 9 MATURE EXISTING TREES TO BE RETAINED
SMALL TREES REMOVED
- 10 SYNTHETIC TURF OPEN SPACES WITH
MOUNDING, UMBRELLAS AND SHADE SAILS
- 11 NATIVE PLANTING TO SLIDE BASE
- 12 NATURE PLAYGROUND IN MULCH
- 13 SHADE SAILS FOR LARGE GROUP GATHERINGS
- 14 STRETCHED MEMBRANE SHADE STRUCTURE
OVER SEATING
- 15 GRANITE "SEA WALL" TO AQUATIC CENTRE
EDGE
- 16 SMART POLES WITH BANNERS TO ENTRY ROAD
- 17 WIRE TRELLIS WITH CLIMBING PLANTS TO
BUILDING FACE
- 18 COLOURED CONCRETE CIRCULATION PATHS
- 19 TRELLIS FENCE ALONG BOUNDARY WITH
CLIMBING VINES
- 20 LANDSCAPE REHABILITATION ZONE
INCLUDING WEED REMOVAL, MULCH & NATIVE
GROUNDCOVERS

Issue	No.	Date	Description	Chkd
1	27/09/2019	DA Submission		CB

Architect
NBRSLANDSCAPEARCHITECTURE

Sydney
61 2 9922 2344
nbrsarchitecture.com

Any form of replication of this drawing in full or in part without the written
permission of NBRSLANDSCAPEARCHITECTURE Pty Ltd constitutes an infringement of
the copyright.

Nominated Architect:
Andrew Duffin NSW 5602
NBRSLANDSCAPEARCHITECTURE Pty Ltd VIC 51197
© 2018
ABN 16 002 247 565

Project

**Batemans Bay - Aquatic, Arts and
Leisure Centre**

at
Mackay Park, Batemans Bay, NSW 2536

for
Eurobodalla Shire Council

Drawing Title
LANDSCAPE PLAN - STAGE 1

Date 27/09/2019 5:52:02 PM
Scale 1:250 @ A1 or 1:500 @ A3

Drawing Reference
18076-NBRSL-L-LDA-101

Revision
1

0 2.5m 5m 7.5m 10m 12.5m 15m 17.5m 20m 1:250





- 1 PERFORMING ARTS CENTRE ENTRY EXPERIENCE WITH TWO-TONED GRANITE UNIT PAVING, FEATURE BANDS, FLUSH TIMBER BOARDWALKS AND GARDEN BED MOUNDS
- 2 LOW SEATING WALLS AND BENCHES LOCATED ALONG GARDEN BED PLANTING WITH SMALL SHADE TREES AND FEATURE GRANITE BOULDERS
- 3 ENTRY EXPERIENCE WITH TWO-TONED GRANITE UNIT PAVING AND FEATURE BANDS
- 4 STAIRS AND RAMP WITH FEATURE WALLS TO PROVIDE ACCESS
- 5 ZERO DEPTH WATER FEATURE TO ENTRY WITH SHADE TREES PLACED SPORADICALLY AND CAFE SEATING BELOW.
- 6 GRANITE BANDING TO CONTINUE ACROSS ROAD
- 7 YARNING CIRCLE GATHERING SPACE WITH DECOMPOSED GRANITE AND FEATURE GRANITE BOULDERS
- 8 BIKE PARKING
- 9 MATURE EXISTING TREES TO BE RETAINED SMALL TREES REMOVED
- 10 SYNTHETIC TURF OPEN SPACES WITH MOUNDING, UMBRELLAS AND SHADE SAILS
- 11 STAGE 2 SPLASH PAD WITH WATER PLAY ELEMENTS
- 12 NATURE PLAYGROUND IN MULCH
- 13 STRETCHED MEMBRANE SHADE STRUCTURE OVER SEATING
- 14 GRANITE "SEA WALL" TO AQUATIC CENTRE EDGE
- 15 SMART POLES WITH BANNERS TO ENTRY ROAD
- 16 WIRE TRELLIS WITH CLIMBING PLANTS TO BUILDING FACE
- 17 COLOURED CONCRETE CIRCULATION PATHS
- 18 TRELLIS FENCE ALONG BOUNDARY WITH CLIMBING VINES
- 19 LANDSCAPE REHABILITATION ZONE INCLUDING WEED REMOVAL, MULCH & NATIVE GROUNDCOVERS

Issue			
No.	Date	Description	Chkd
1	27/09/2019	DA Submission	CB

Architect
NBRSLANDSCAPEARCHITECTURE

Sydney
61 2 9922 2344
nbrsarchitecture.com
Any form of replication of this drawing in full or in part without the written permission of NBRSPARTNERS Pty Ltd constitutes an infringement of the copyright.
Nominated Architect:
Andrew Duffin NSW 5602
NBRSPARTNERS Pty Ltd VIC 51197
© 2018
ABN 16 002 247 565

Project
Batemans Bay - Aquatic, Arts and Leisure Centre
at
Mackay Park, Batemans Bay, NSW 2536

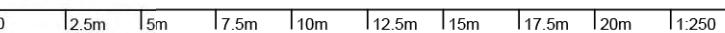
for
Eurobodalla Shire Council

Drawing Title
LANDSCAPE PLAN - STAGE 2

Date 27/09/2019 5:52:28 PM
Scale 1:250 @ A1 or 1:500 @ A3

Drawing Reference
18076-NBRSL-L-LDA-102

Revision
1





LARGE EXISTING NATIVE TREES
TO BE RETAINED ALONG PRINCES
HWY. SMALL AND EXOTIC TREES TO
BE REMOVED TO INCREASE VISUAL
CONNECTIONS

WAY FINDING SIGNAGE TO
AQUATIC ENTRY

LOCAL GRANITE BOULDERS
TO REFLECT REGIONAL
CHARACTER

MASS PLANTING OF LOW
MAINTENANCE ENDEMIC PLANTING
INCLUDING GROUNDCOVERS,
SHRUBS AND TREES - REFER PLANT
SCHEDULE

SEATING WALLS 450mm HIGH WITH
FEATURE STONE FACE GRANITE AND
RECYCLED TIMBER BATTEN TOP

GRANITE FEATURE PAVING
BANDS

LANDSCAPE MOUNDING TO HELP
SCREEN/SHELTER ENTRY AREA
FROM ADJACENT ROADS - MAX
800mm HIGH

TWO TONE GRANITE UNIT
PAVING TO CIVIC PLAZA SPACE

WAY FINDING SIGNAGE WALL

COMBINED BANNER POLES
AND STREET LIGHTS ALONG
BEACH ROAD TO HIGHLIGHT
ENTRY

CONCRETE PAVEMENT
FOOTPATH AT ROAD
INTERFACE

CATENARY/OVERHEAD
LIGHTING TO PROVIDE
CHARACTER

FLUSH TIMBER
BOARDWALK WITH
RECYCLED TIMBER
FROM EXISTING TREES
ON SITE

FEATURE BLADE
ENTRY WALLS WITH
GRANITE & TIMBER
MAX 800mm HIGH

Issue	No.	Date	Description	Chkd
1	27/09/2019	DA Submission		CB

Architect
NBRSPARTNERS
LANDSCAPE

Sydney
61 2 9922 2344
nbrsarchitecture.com

Any form of replication of this drawing in full or in part without the written
permission of NBRSPARTNERS Pty Ltd constitutes an infringement of
the copyright.

Nominated Architect:
Andrew Duffin NSW 5602
NBRSPARTNERS Pty Ltd VIC 51197
ABN 16 002 247 565

Project

**Batemans Bay - Aquatic, Arts and
Leisure Centre**

at
Mackay Park, Batemans Bay, NSW 2536

for
Eurobodalla Shire Council

Drawing Title
DETAILED PLAN 1

TURF	PROPOSED TREES 200LT POT SIZES	PROPOSED PALMS	HARDWOOD TIMBER BOARDWALK FLUSH WITH ADJACENT PAVING	DECOMPOSED GRANITE	STAINLESS STEEL TENSILE WIRE & POST FENCE 2.4m HIGH
MASS PLANTING 5 PLANTS PER m ² 5LT POT SIZE	PROPOSED GRASS TREES 45L POT SIZE	COLOURED CONCRETE	LOW SEATING WALLS	MULCH SOFT FALL WITH HARDWOOD TIMBER NATURE PLAYGROUND ELEMENTS	EXISTING FENCE RETAINED
CLIMBING VINES ON WIRE TRELLIS	EXISTING TREES TO BE RETAINED (REFER SHEET 110 FOR EXISTING TREE PLAN)	LIGHT GRANITE UNIT PAVING ON CONCRETE SLAB	WAY FINDING SIGNAGE	ASPHALT CARPARK	
LANDSCAPE REHABILITATION ZONE	EXISTING TREES TO BE REMOVED (REFER SHEET 110 FOR EXISTING TREE PLAN)	DARK GRANITE UNIT PAVING ON CONCRETE SLAB	GRANITE BOULDERS LOCALLY SOURCED	STAINLESS STEEL TENSILE WIRE TRELLIS 2.6m HIGH WITH VINES	

Date 27/09/2019 5:52:37 PM
Scale 1:100 @ A1 or 1:200 @ A3

Drawing Reference
18076-NBRSPARTNERS-L-LDA-103

Revision
1



EXISTING EUCALYPTUS TO BE
RETAINED AND PROTECTED AS
LANDSCAPE CENTRE POINT

YARNING CIRCLE ON DECOMPOSED
GRANITE WITH LOW SEATING WALLS
AND FEATURE BOULDERS

GRANITE FEATURE PAVING
BANDS THROUGH ROAD
SURFACE TO SIGNIFY ENTRY

FEATURE GRANITE STONE
FACED WALL - MAX 700mm
HIGH

GRANITE STONE FACED
PRIVACY WALL TO
REHERSAL COURTYARD 1.8m
HIGH

Issue				
No.	Date	Description	Chkd	
1	27/09/2019	DA Submission	CB	

Architect
NBRARCHITECTURE
LANDSCAPE

Sydney
61 2 9922 2344
nbrsarchitecture.com
Any form of replication of this drawing in full or in part without the written
permission of NBR+PARTNERS Pty Ltd constitutes an infringement of
the copyright.
Nominated Architect:
Andrew Duffin NSW 5602
NBR & Partners Pty Ltd VIC 51197
© 2018
ABN 16 002 247 565

Project
**Batemans Bay - Aquatic, Arts and
Leisure Centre**
at
Mackay Park, Batemans Bay, NSW 2536

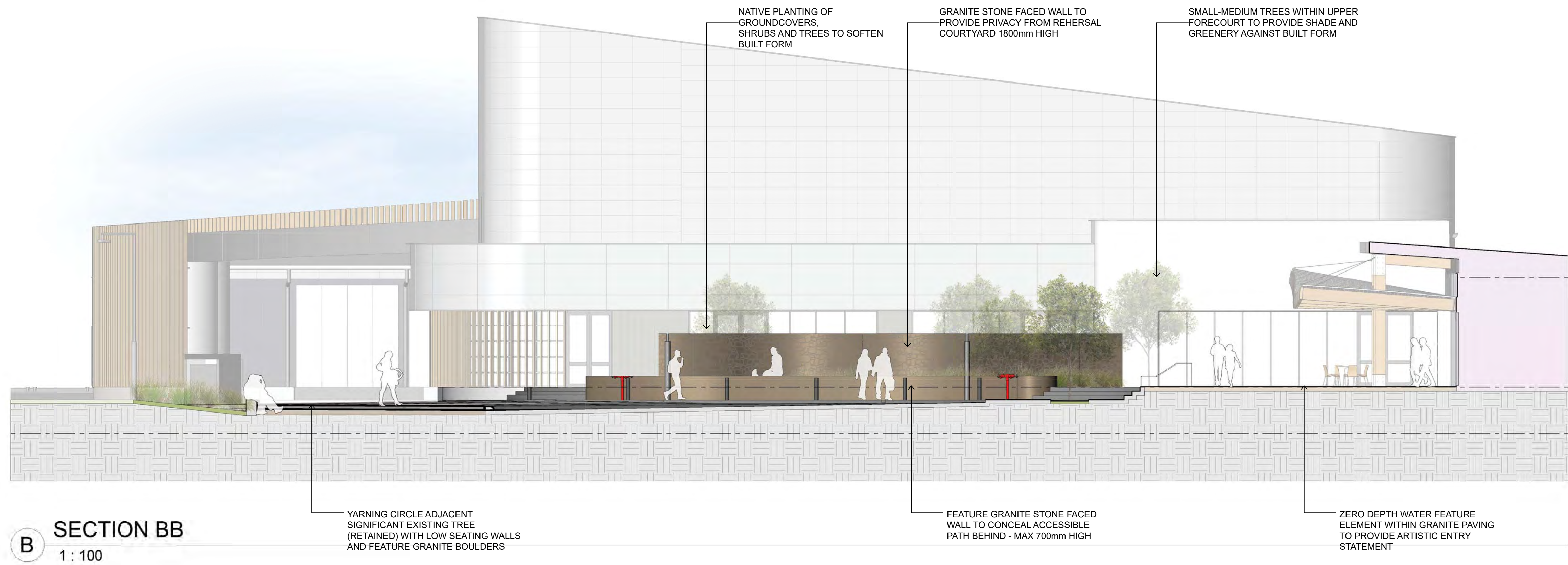
for
Eurobodalla Shire Council

Drawing Title
DETAILED PLAN 2

Date 27/09/2019 5:52:43 PM
Scale 1:100 @ A1 or 1:200 @ A3

Drawing Reference
18076-NBR-L-LDA-104
Revision
1

- TURF
- MASS PLANTING 5 PLANTS
PER m² 5LT POT SIZE
- CLIMBING VINES ON WIRE
TRELLIS
- LANDSCAPE
REHABILITATION ZONE
- PROPOSED TREES 200LT
POT SIZES
- PROPOSED GRASS TREES
45L POT SIZE
- EXISTING TREES TO BE
RETAINED (REFER SHEET 110
FOR EXISTING TREE PLAN)
- EXISTING TREES TO BE
REMOVED (REFER SHEET 110
FOR EXISTING TREE PLAN)
- PROPOSED PALMS
- COLOURED CONCRETE
- LIGHT GRANITE UNIT PAVING
ON CONCRETE SLAB
- DARK GRANITE UNIT PAVING
ON CONCRETE SLAB
- HARDWOOD TIMBER
BOARDWALK FLUSH WITH
ADJACENT PAVING
- LOW SEATING WALLS
- WAY FINDING SIGNAGE
- GRANITE BOULDERS
LOCALLY SOURCED
- DECOMPOSED GRANITE
- MULCH SOFT FALL WITH
HARDWOOD TIMBER NATURE
PLAYGROUND ELEMENTS
- ASPHALT CARPARK
- STAINLESS STEEL TENSILE WIRE & POST
FENCE 2.4m HIGH
- EXISTING FENCE RETAINED
- STAINLESS STEEL TENSILE WIRE TRELLIS
2.6m HIGH WITH VINES



Issue			
No.	Date	Description	Chkd
1	27/09/2019	DA Submission	CB

Architect
NBRSARCHITECTURE
LANDSCAPE

Sydney
61 2 9922 2344
nbrsarchitecture.com
Any form of replication of this drawing in full or in part without the written permission of NBRS+PARTNERS Pty Ltd constitutes an infringement of the copyright.
Nominated Architect:
Andrew Duffin NSW 5602
NBRS & Partners Pty Ltd VIC 51197
© 2018
ABN 16 002 247 565

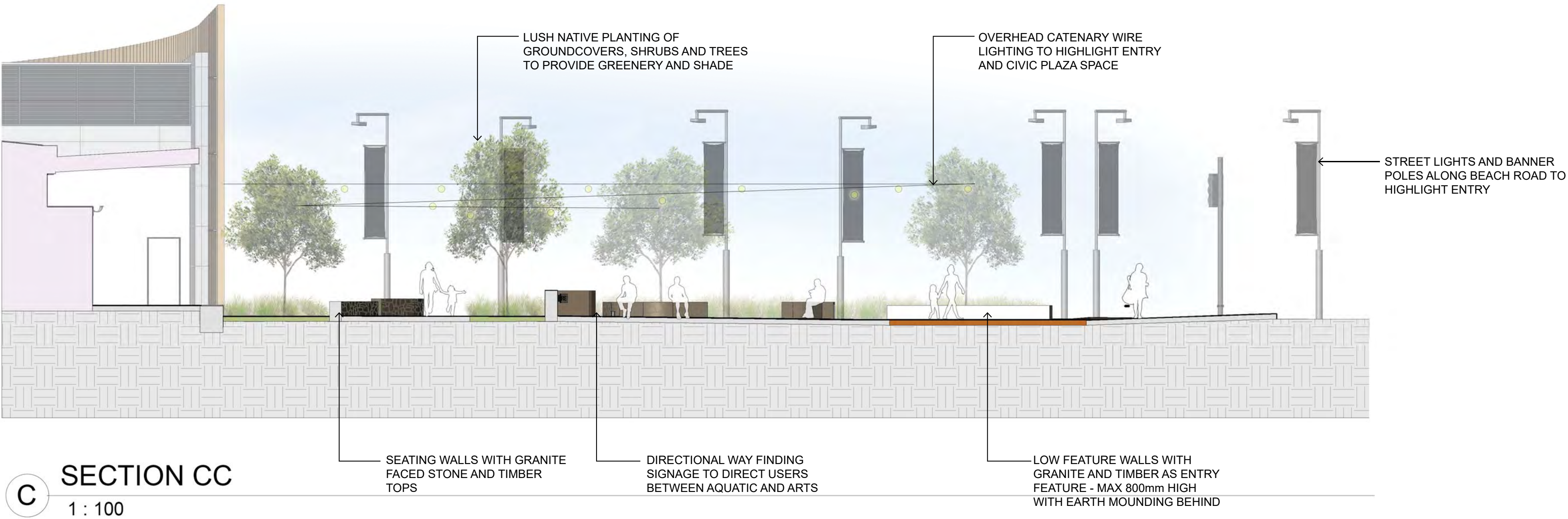
Project
Batemans Bay - Aquatic, Arts and Leisure Centre
at
Mackay Park, Batemans Bay, NSW 2536
for
Eurobodalla Shire Council

Drawing Title
SECTIONS

Date 27/09/2019 5:53:19 PM
Scale 1:100 @ A1 or 1:200 @ A3

Drawing Reference
18076-NBRS-L-LDA-105
Revision
1

0 1m 2m 3m 4m 5m 6m 7m 8m 9m 10m 11m 12m 13m 14m 15m 16m 17m 18m 19m 20m



C SECTION CC
1 : 100



D SECTION DD
1 : 100

Issue				
No.	Date	Description	Chkd	
1	27/09/2019	DA Submission	CB	

Architect
NBRSand LANDSCAPE
Sydney
61 2 9922 2344
nbrsarchitecture.com
Any form of replication of this drawing in full or in part without the written permission of NBRSand PARTNERS Pty Ltd constitutes an infringement of the copyright.
Nominated Architect:
Andrew Duffin NSW 5602
NBRSand Partners Pty Ltd VIC 51197
© 2018
ABN 16 002 247 565
Project
Batemans Bay - Aquatic, Arts and Leisure Centre
at
Mackay Park, Batemans Bay, NSW 2536
for
Eurobodalla Shire Council

Drawing Title
SECTIONS

Date 27/09/2019 5:53:52 PM
Scale 1:100 @ A1 or 1:200 @ A3

Drawing Reference
18076-NBRSand-L-LDA-106
Revision
1

0 1m 2m 3m 4m 5m 6m 7m 8m 9m 10m

TREES



ACMENA SMITHII



BRACHYCHITON POPULNEUS



CUPANIOPSIS ANACARDIOIDES



BANKSIA INTEGRIFOLIA



EUCALYPTUS RADIATA



LIVISTONA AUSTRALIS

GRASS TREE



XANTHORRHOEA AUSTRALIS

SHRUBS



BANKSIA SPINULOSA



DIANELLA CAERULEA



DIANELLA REVOLUTA



EREMOPHILA MACULATA



LOMANDRA LONGIFOLIA



MACROZAMIA COMMUNIS



MELALEUCA HYPERICIFOLIA



MELALEUCA THYMFOLIA

GROUND COVERS



CARPOBROTUS GLAUDESCENS



HARDENBERGIA VIOLACEA



KENNEDIA PROSTRATA



MYOPORUM PARVIFOLIUM

TREES

Botanical Name	Common Name	Pot Size	Density	Height	Width
<i>Acmena smithii</i>	Lilly Pilly	200L	As Shown	12m	6m
<i>Banksia integrifolia</i>	Coast Banksia	200L	As Shown	15m	6m
<i>Brachychiton populneus</i>	Kurrajong Tree	200L	As Shown	8-10m	10m
<i>Cupaniopsis anacardioides</i>	Tuckeroo	200L	As Shown	5-8m	5-7m
<i>Cyathea australis</i>	Rough Tree Fern	200L	As Shown	6m	5m
<i>Elaeocarpus reticulatus</i>	Blueberry Ash	200L	As Shown	9m	4m
<i>Eucalyptus radiata</i>	Narrow Leaved Peppermint	200L	As Shown	15-20m	8-12m
<i>Livistona australis</i>	Cabbage-Tree Palm	3m Clear	As Shown	30m	1m

GRASS TREE

Botanical Name	Common Name	Pot Size	Density	Height	Width
<i>Xanthorrhoea australis</i>	Grass Tree	45L	As Shown	2m	1m

SHRUBS & GRASSES

Botanical Name	Common Name	Pot Size	Density	Height	Width
<i>Backhousia myrtifolia</i>	Grey Myrtle	25L	5per Sq.M	3m	2-4m
<i>Banksia spinulosa</i>	Hairpin Banksia	25L	5per Sq.M	2m	2m
<i>Dianella caerulea</i>	Blue Flax-Lily	25L	5per Sq.M	1m	2m
<i>Dianella revoluta</i>	Black-Anther Flax-Lily	25L	5per Sq.M	1.5m	2.5m
<i>Eremophila maculata</i>	Spotted Emu Bush	25L	5per Sq.M	1-2m	2-3m
<i>Lomandra longifolia</i>	Mat Rush	25L	5per Sq.M	1m	0.6m
<i>Macrozamia communis</i>	Burrawang	25L	5per Sq.M	1.5-2m	1.5-2m
<i>Melaleuca hypericifolia</i>	Honey Myrtle	25L	5per Sq.M	0.5m	1-2m
<i>Melaleuca thymifolia</i>	Thyme Leaf Honey Myrtle	25L	5per Sq.M	1	1-2m

GROUND COVERS

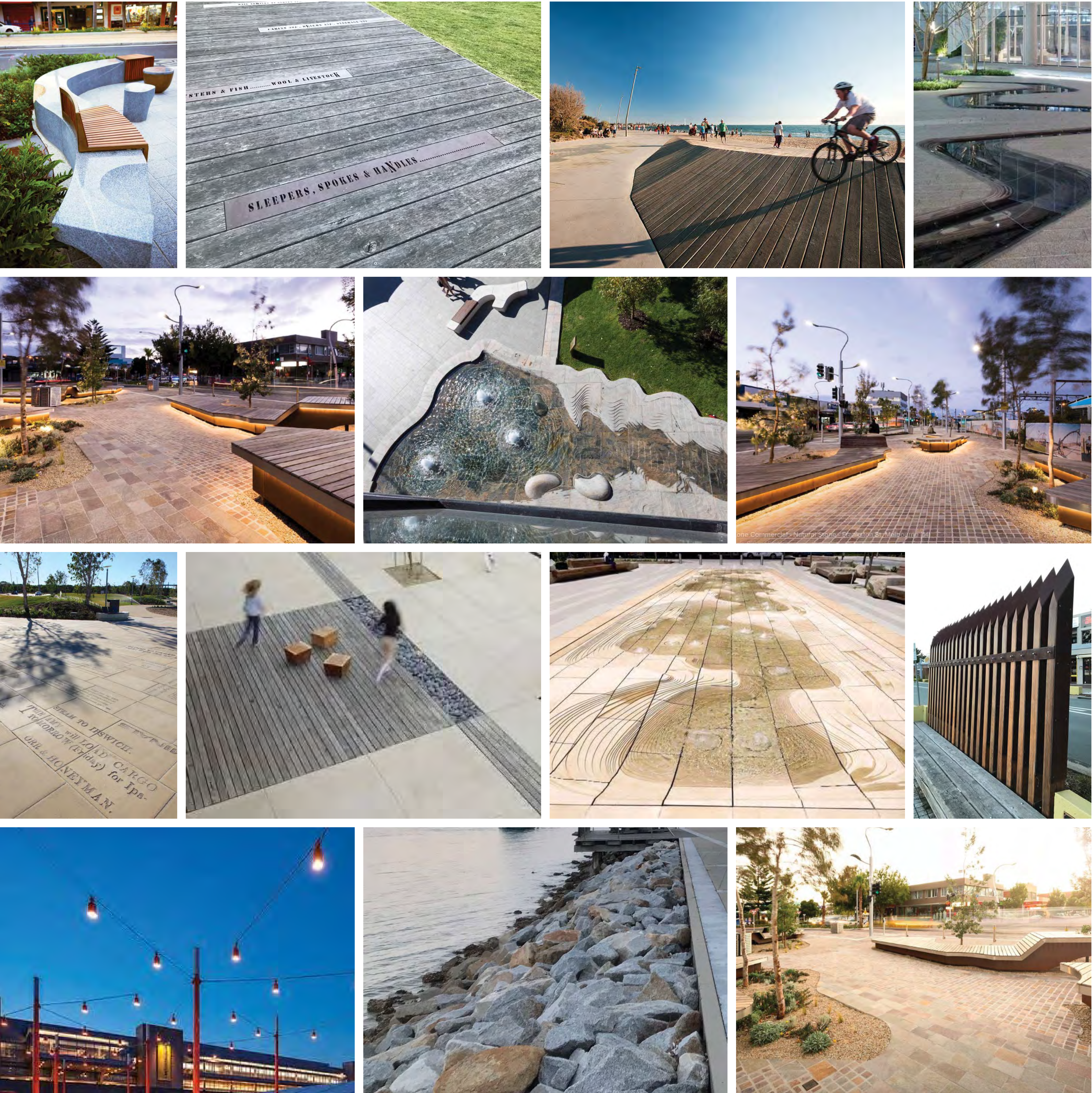
Botanical Name	Common Name	Pot Size	Density	Height	Width
<i>Carpobrotus glaucescens</i>	Pig Face	5L	5per Sq.M	0.1-0.3m	2m
<i>Hardenbergia violacea</i>	Native Lilac	5L	5per Sq.M	0.5m	2m
<i>Kennedia prostrata</i>	Scarlet Coral Pea	5L	5per Sq.M	1m	1-3m
<i>Myoporum parvifolium</i>	Creeping Boobialla	5L	5per Sq.M	0.2m	2m

NOTE: CONSIDERATION HAS BEEN TAKEN TO SELECT TREE SPECIES AND LOCATIONS THAT ARE APPROPRIATE TO BUSH FIRE STANDARDS.

SELECT SPECIES HAVE ALSO BEEN CONSIDERED IN ACCORDANCE WITH LOCAL INDIGENOUS HERITAGE

Issue				
No.	Date	Description	Chkd	
1	27/09/2019	DA Submission	CB	

PRECEDENT IMAGES - HARDSCAPE



MATERIALS



Issue				Chkd
No.	Date	Description		
1	27/09/2019	DA Submission		CB

Architect
NBRSPARTNERS
LANDSCAPE

Sydney
61 2 9922 2344
nbrsarchitecture.com
Any form of replication of this drawing in full or in part without the written permission of NBRSPARTNERS Pty Ltd constitutes an infringement of the copyright.
Nominated Architect:
Andrew Duffin NSW 5602
NBRSPARTNERS Pty Ltd VIC 51197
© 2018
ABN 16 002 247 565

Project
Batemans Bay - Aquatic, Arts and Leisure Centre
at
Mackay Park, Batemans Bay, NSW 2536
for
Eurobodalla Shire Council

Drawing Title
LANDSCAPE PRECEDENT IMAGES

PRECEDENT IMAGES - SOFTSCAPE



Issue			
No.	Date	Description	Chkd
1	27/09/2019	DA Submission	CB

Architect
NBRSLANDSCAPEARCHITECTURE
Sydney
61 2 9922 2344
nbrsarchitecture.com
Any form of replication of this drawing in full or in part without the written permission of NBRSPARTNERS Pty Ltd constitutes an infringement of the copyright.
Nominated Architect:
Andrew Duffin NSW 5602
NBRSPartners Pty Ltd VIC 51197
© 2018
ABN 16 002 247 565

Project
Batemans Bay - Aquatic, Arts and Leisure Centre
at
Mackay Park, Batemans Bay, NSW 2536
for
Eurobodalla Shire Council

Drawing Title
LANDSCAPE PRECEDENT IMAGES

EXISTING TREE SCHEDULE			
Tree No.	Botanical Name	Common Name	Retain / Remove
1	Eucalyptus tereticornis	Forest Red Gum	Remove
2	Eucalyptus microcorys	Tallowwood	Remove
3	Eucalyptus microcorys	Tallowwood	Remove
4	Eucalyptus microcorys	Tallowwood	Remove
5	Eucalyptus microcorys	Tallowwood	Remove
6	Eucalyptus tereticornis	Forest Red Gum	Retain
7	Eucalyptus microcorys	Tallowwood	Remove
8	Eucalyptus microcorys	Tallowwood	Remove
9	Eucalyptus microcorys	Tallowwood	Remove
10	Banksia integrifolia	Coastal Banksia	Remove
11	Agonis flexuosa	Weeping Myrtle	Remove
12	Agonis flexuosa	Weeping Myrtle	Remove
13	Agonis flexuosa	Weeping Myrtle	Remove
14	Agonis flexuosa	Weeping Myrtle	Remove
15	Agonis flexuosa	Weeping Myrtle	Remove
16	Agonis flexuosa	Weeping Myrtle	Remove
17	Agonis flexuosa	Weeping Myrtle	Remove
18	Agonis flexuosa	Weeping Myrtle	Remove
19	Agonis flexuosa	Weeping Myrtle	Remove
20	Agonis flexuosa	Weeping Myrtle	Remove
21	Agonis flexuosa	Weeping Myrtle	Remove
22	Agonis flexuosa	Weeping Myrtle	Remove
23	Agonis flexuosa	Weeping Myrtle	Remove
24	Agonis flexuosa	Weeping Myrtle	Remove
25	Agonis flexuosa	Weeping Myrtle	Remove
26	Agonis flexuosa	Weeping Myrtle	Remove
27	Agonis flexuosa	Weeping Myrtle	Remove
28	Eucalyptus tereticornis	Forest Red Gum	Retain
29	Melaleuca linariifolia	Narrow Leaved Paperbark	Remove
30	Eucalyptus tereticornis	Forest Red Gum	Remove
31	Melaleuca linariifolia	Narrow Leaved Paperbark	Remove
32	Melaleuca linariifolia	Narrow Leaved Paperbark	Remove
33	Melaleuca linariifolia	Narrow Leaved Paperbark	Remove
34	Melaleuca linariifolia	Narrow Leaved Paperbark	Remove
35	Melaleuca linariifolia	Narrow Leaved Paperbark	Remove
36	Melaleuca linariifolia	Narrow Leaved Paperbark	Remove
37	Melaleuca linariifolia	Narrow Leaved Paperbark	Retain
38	Melaleuca linariifolia	Narrow Leaved Paperbark	Retain
39	Melaleuca linariifolia	Narrow Leaved Paperbark	Retain
40	Banksia integrifolia	Coastal Banksia	Remove
41	Unknown - Juvenile Exotic		Remove
42	Unknown - Juvenile Exotic		Remove
43	Unknown - Juvenile Exotic		Remove
44	Casuarina glauca	She-Oak	Remove
45	Casuarina glauca	She-Oak	Remove
46	Casuarina glauca	She-Oak	Remove
47	Casuarina glauca	She-Oak	Remove
48	Fraxinus sp.		Remove
49	Eucalyptus sp. (Juvenile)	Gum	Remove
50	Syagrus romanzoffiana	Cocus Palm	Remove
51	Syagrus romanzoffiana	Cocus Palm	Remove
52	Syagrus romanzoffiana	Cocus Palm	Remove
53	Syagrus romanzoffiana	Cocus Palm	Remove
54	Syagrus romanzoffiana	Cocus Palm	Remove
55	Syagrus romanzoffiana	Cocus Palm	Remove
56	Syagrus romanzoffiana	Cocus Palm	Remove
57	Syagrus romanzoffiana	Cocus Palm	Remove
58	Syagrus romanzoffiana	Cocus Palm	Remove
59	Syagrus romanzoffiana	Cocus Palm	Remove
60	Syagrus romanzoffiana	Cocus Palm	Remove
61	Syagrus romanzoffiana	Cocus Palm	Remove
62	Syagrus romanzoffiana	Cocus Palm	Remove
63	Syagrus romanzoffiana	Cocus Palm	Remove
64	Syagrus romanzoffiana	Cocus Palm	Remove
65	Syagrus romanzoffiana	Cocus Palm	Remove
66	Eucalyptus microcorys	Tallowwood	Retain
67	Eucalyptus microcorys	Tallowwood	Retain
68	Casuarina glauca	She Oak	Remove
69	Casuarina glauca	She Oak	Remove
70	Casuarina glauca	She Oak	Remove
71	Eucalyptus microcorys	Tallowwood	Retain
72	Banksia integrifolia	Coastal Banksia	Retain
73	Banksia integrifolia	Coastal Banksia	Remove
74	Eucalyptus microcorys	Tallowwood	Retain
75	Gleichenia ferdiandi	Cheese Tree	Remove
76	Eucalyptus microcorys	Tallowwood	Retain
77	Eucalyptus microcorys	Tallowwood	Retain
78	Eucalyptus microcorys	Tallowwood	Retain
79	Casuarina glauca	She Oak	Remove
80	Casuarina glauca	She Oak	Remove
81	Casuarina glauca	She Oak	Remove
82	Casuarina glauca	She Oak	Remove
83	Banksia integrifolia	Coastal Banksia	Remove
84	Melaleuca ericifolia	Swamp Paperbark	Remove
85	Eucalyptus microcorys	Tallowwood	Retain
86	Eucalyptus tereticornis	Forest Red Gum	Remove
87	Melaleuca ericifolia	Swamp Paperbark	Remove
88	Casuarina glauca	She Oak	Remove
89	Banksia integrifolia	Coastal Banksia	Retain
90	Casuarina glauca	She Oak	Remove
91	Casuarina glauca	She Oak	Remove
92	Casuarina glauca	She Oak	Remove
93	Banksia integrifolia	Coastal Banksia	Retain
94	Melaleuca ericifolia	Swamp Paperbark	Remove
95	Callistemon sp	Bottle Brush	Remove
96	Melaleuca ericifolia	Swamp Paperbark	Remove
97	Callistemon sp	Bottle Brush	Remove
98	Callistemon sp	Bottle Brush	Remove
99	Eucalyptus tereticornis	Forest Red Gum	Remove
100	Eucalyptus microcorys	Tallowwood	Remove
101	Eucalyptus robusta	Swamp Mahogany	Remove
102	Casuarina glauca	She Oak	Remove
103	Eucalyptus tereticornis	Forest Red Gum	Retain
104	Eucalyptus tereticornis	Forest Red Gum	Retain
105	Casuarina glauca	She Oak	Retain
106	Casuarina glauca	She Oak	Retain
107	Casuarina glauca	She Oak	Retain
108	Casuarina glauca	She Oak	Retain
109	Casuarina glauca	She Oak	Retain



Issue No.	Date	Description	Chkd
1	27/09/2019	DA Submission	CB

Architect
NBRSARCHITECTURE
LANDSCAPE

Sydney
61 2 9922 2344
nbrsarchitecture.com
Any form of replication of this drawing in full or in part without the written permission of NBRs+PARTNERS Pty Ltd constitutes an infringement of the copyright.
Nominated Architect:
Andrew Duffin NSW 5602
NBRs & Partners Pty Ltd VIC 51197
© 2018
ABN 16 002 247 565

Project
Batemans Bay - Aquatic, Arts and Leisure Centre
at
Mackay Park, Batemans Bay, NSW 2536

for
Eurobodalla Shire Council

Drawing Title
EXISTING TREE PLAN

Date 27/09/2019 5:51:21 PM
Scale 1:500 @ A1 or 1:1000 @ A3

Drawing Reference
18076-NBRs-L-LDA110

Revision
1

